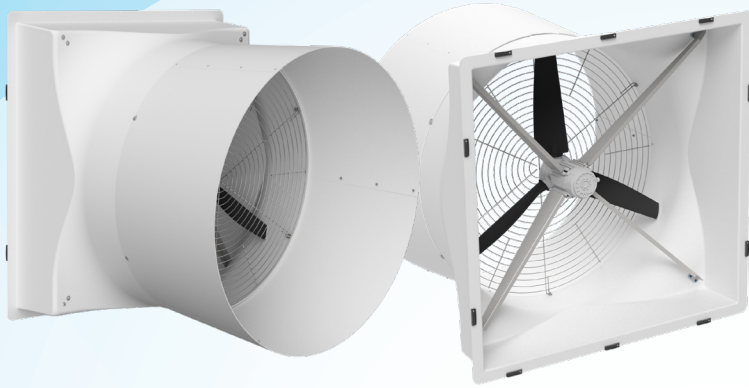
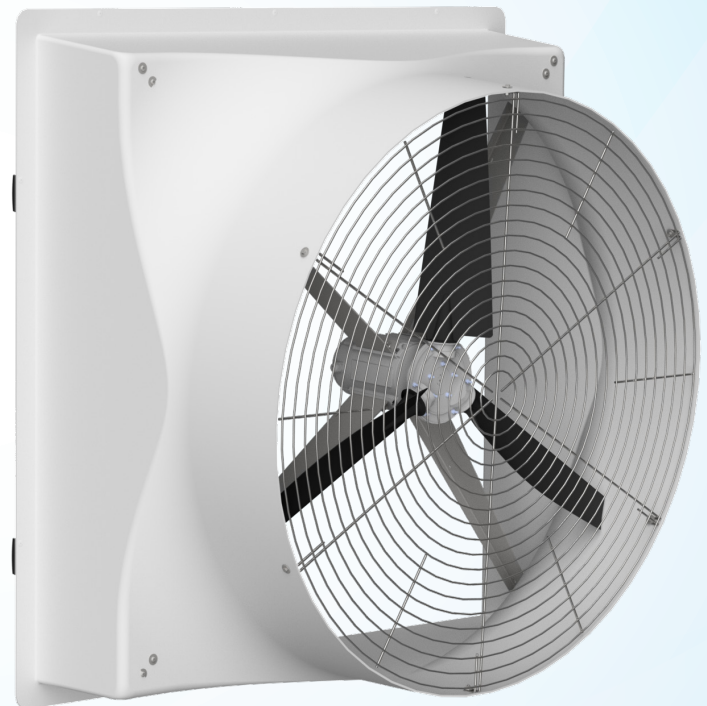


Fan Size	Model #	Housing	Drive Type	RSO (inches)	HP/KW	Volts	PH
60"	FW-60EC	Fiberglass	Direct Drive	65.5 x 65.5	3hp/2.2kw	230v	1-3

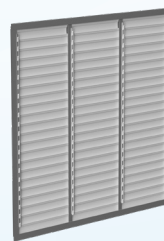


CFM@.05 SP
36,900 cfm @ .05 SP /
18.7 cfm/w
 * with cone & shutter



FEATURES

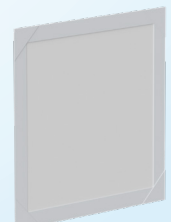
- ECM motor results in best in class efficiency and performance. ECM motors do not need an external VFD drive to run, this is much more cost effective and simple compared to fans using VFDs.
- Aerodynamic fiberglass Housing funnel encourages free air flow, and is designed with a slope to drain condensation out of the barn.
- Variable Speed uses a 0-10v signal eliminating the need for costly VFDs, and giving you precise control of your environment.
- Direct Drive operation results in very little maintenance, no belts, bearings or shafts.
- Roll seal shutter, for increased efficiency and performance is optional. With this shutter type this fan has been tested to move more then 41,000 CFM.
- A complete line of winter accessories is available.



Shutters



Fan Covers



Winter Covers