



- ▶ Slanted design projects 12" from outside of barn.
- ▶ Condensation flows down and away from barn, keeping walls clean and dry.
- ▶ Inside mounting is flush, eliminating obstructions along walkways.
- ▶ All motors are epoxy coated, feature totally enclosed air-over design, thermal overload protection, and double-sealed, permanently-lubricated ball bearings.
- ▶ All fans carry a one year conditional guarantee. CSA approved.

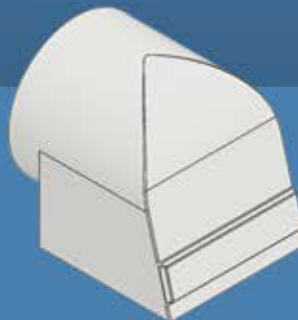
Model No.	Motor	Voltage	RSO	RPM	CFM
LPF-2401	Direct Drive	115/230V	31.75" W x 31.75" L	1,625	6,640 @.05 SP
FLA	Shipping Weight	Housing Material	CSA		
5.0 / 2.5	65 lbs	Durable Polyethylene	Approved		



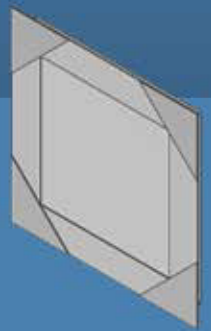
FS - 25



FC - 25



FH - 25



WC - 25