

## ADVANCED OPENING SERIES

Our advanced opening system works by allowing selected inlets to start opening while the others remain closed. This is ideal for minimum ventilation, as it gives you more control over your barn climate. When more air movement is needed, the inlets continue to open and the second stage of inlets start to open as well, catching up with the first stage.

- » Cable allows for manual or computer operated baffle control using an optional cable system
- » 2-stage advanced opening allows for precise minimum ventilation control
- » Insulated frame and door minimizes condensation, dripping, or freezing  
Ideal for use in combination with recirculation ducts
- » All inlets are constructed with removable insulation stops
- » Sturdy Poly Urethane construction

## AIR INTAKE



NEW

SF-720 AIR INLET

### SF-720 AIR INLET

ACTUATED SINGLE SIDED INLET

Model No: SF-720  
RSO: 11.5" W x 16" L  
CFM: 700 @ .05 SP  
Shipping Wt: 7lbs  
Housing Material: Poly Urethane  
Lid Material: Poly Urethane



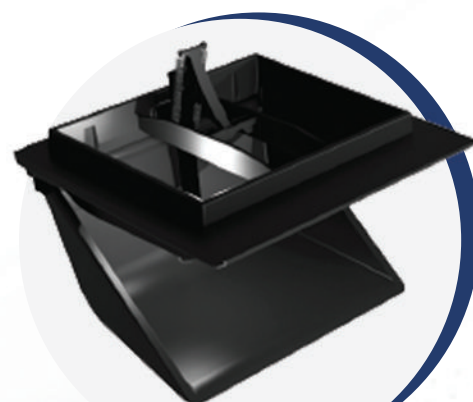
NEW

DIA-1520 AIR INLET

### SF-1420 AIR INLET

ACTUATED SINGLE SIDED INLET

Model No: SF-1420  
RSO: 21" W x 17" L  
CFM: 1,400 @ .05 SP  
Shipping Wt: 7lbs  
Housing Material: Poly Urethane  
Lid Material: Poly Urethane



SF-1420 AIR INLET

### DIA-1520 AIR INLET

ACTUATED SINGLE SIDED INLET

Model No: DIA-1520  
RSO: 16" W x 25" L  
CFM: 1,400 @ .05 SP  
Shipping Wt: 7lbs  
Housing Material: Poly Urethane  
Lid Material: Poly Urethane

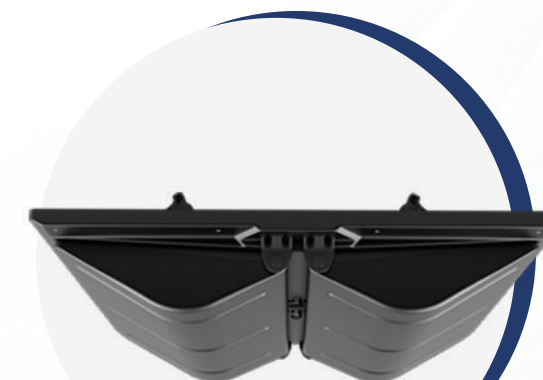
## AIR INTAKE



SF-720



SF-1420



DIA-1520 AIR INLET